

BALDOR® • RELIANCE

Product Information Packet

CLARK TRANSMISSION CO.

IDWNM3554T

1.5HP, 1755RPM, 3PH, 60HZ, 145TC, 3533M, TENV

Part Detail							
Revision:	H	Status:	PRD/A	Change #:		Proprietary:	No
Type:	AC	Prod. Type:	3533M	Elec. Spec:	35WGM613	CD Diagram:	CD0005
Enclosure:	TENV	Mfg Plant:		Mech. Spec:	35TT996	Layout:	35LYTT996
Frame:	145TC	Mounting:	F1	Poles:	04	Created Date:	12-21-2009
Base:	RG	Rotation:	R	Insulation:	H	Eff. Date:	11-12-2013
Leads:	9#18					Replaced By:	
Literature:		Elec. Diagram:					

Nameplate NP1608L

CAT NO	IDWNM3554T						
SPEC.	35TT996M613						
FRAME	145TC	HP	1.5	TE			
VOLTS	230/460						
MAG CUR	2.4/1.2	FLA	4.2/2.1				
RPM	1755	RPM MAX	4500				
HZ	60	PH	3	CLASS	H		
SER.F.	1.00	DES	B	SL HZ	1.5		
NEMA-NOM-EFF	86.5	WK2	0.2				
BLWR V		PH		HZ		A	
RATING	40C AMB-CONT						
DE BRG	6205	ODE BRG	6203				
CC		SN					

Parts List		
Part Number	Description	Quantity
SA188989	SA 35TT996M613	1.000 EA
RA176709	RA 35TT996M613	1.000 EA
NS2512A01	INSULATOR, CONDUIT BOX X	1.000 EA
35CB3010A01W	35 CB .75 NPT @ 6:00, WHITE EPOXY	1.000 EA
35GS1039	05 MOLDED GASKET W/LIP, 1.12 LEAD HOLE,	1.000 EA
51XB1016A07	10-16 X 7/16 HXWSSLD SERTYB	2.000 EA
11XW1032G06	10-32 X .38, TAPTITE II, HEX WSHR SLTD U	1.000 EA
35EP3100M70MW	FR TENV 203 BRG WD W/ THRU-SHAFT ENCODER	1.000 EA
HW4032A01	BLACK DRAIN PLUG FOR WASH DOWN MOTORS	3.000 EA
HW4600A09SP	SEAL 0.656 X 1.124 X 0.250 DOUBLE SHIELD	1.000 EA
HW5100A03SP	WAVY WASHER (W1543-017)	1.000 EA
35EP3300A48MW	SPL FACE MTD EP - 205 BRG - W/SEAL FOR W	1.000 EA
HW4032A01	BLACK DRAIN PLUG FOR WASH DOWN MOTORS	3.000 EA
HW4600B49SP	SEAL 0.938 X 1.624 X 0.250 SINGLE LIP DB	1.000 EA
12XN1032S20	10-32 X 1-1/4 HEX M.S. , STAINLESS STEEL	2.000 EA
35FH4801W	THRU-SHAFT ENCODER COVER INV/VEC F1 & F2	1.000 EA
WD4129	1.50 X 1.50 GRAY SNAP IN PLUG PROMOULD #	2.000 EA
10XN2520S08	SCREW, 1/4-20 X 1/2 HHCS SS	4.000 EA
10XN2520S08	SCREW, 1/4-20 X 1/2 HHCS SS	1.000 EA
35CB4522	35 LIPPED CB LID AUTOPHORETIC	1.000 EA
35GS1030A02	35 GS FOR CB LID - WHITE NEOPRENE	1.000 EA
59XW0832S07	TAPTITE II,HEX WSHR UNSLTD SER,410 S.S.,	4.000 EA
HW4600B46SP	SEAL 0.875 X 1.420 X 0.240 FACE SEALING	1.000 EA
HW2502D13	SS KEY, 3/16 SQ X 1.375	1.000 EA

Parts List (continued)		
Part Number	Description	Quantity
HA7000A01	KEY RETAINER 7/8" DIA SHAFT	1.000 EA
MJ5004A05	#242-21 LOCTITE GENERAL PURPOSE MED. STR	0.005 EA
MJ5001A27	32220KN GRAY SEALER	0.001 QT
85XU0407S04	4X1/4 U DRIVE PIN STAINLESS	2.000 EA
LB1164	LABEL,WARNING AND DRAIN	1.000 EA
MJ1000A75	GREASE, POLYREX EM EXXON (USe 4824-15A)	0.050 LB
MG1025Z02	ACTIVATOR WILKOFAS 060-02	0.010 GA
MG1025W01	RAL9003, SIGNAL WHITE, GLOSS 85	0.017 GA
HA3100S09	THRUBOLT 9.25 LENGTH SS	4.000 EA
LB1125C01	STD (STOCK) CARTON LABEL BALDOR WITH FLA	1.000 EA
LC0145B01	CONNECTION LABEL	1.000 EA
NP1608L	SS WD INV UL CSA CC REV MTG	1.000 EA
36PA1000	PACK GROUP W/LB5001	1.000 EA
LB1506	LABEL "AMERICAN MADE" 1.50 X 1.00	1.000 EA
MN416A01	TAG-INSTAL-MAINT no wire. (100/bx) 8/12	1.000 EA

AC Induction Motor Performance Data

Page 1 of 1



AC Induction Motor Performance Data

Record # 36529

Typical performance - not guaranteed values

Winding: 35WGM613	Type: 3533M	Enclosure: TENV
--------------------------	--------------------	------------------------

Nameplate Data			General Characteristics at 460 V, 60 Hz: High Volt Connection		
Rated Output (HP)	1.5		Full Load Torque	4.45 LB-FT	
Volts	230/460		Start Configuration	DOL	
Full Load Amps	4.2/2.1		Break Down Torque	20.8 LB-FT	
R.P.M.	1755		Pull-Up Torque	11.7 LB-FT	
Hz	60	Phase	3	Locked-rotor Torque	14.6 LB-FT
NEMA Design Code	B	KVA Code	K	Starting Current	20 Amps
Service Factor	1		No-load Current	1.17 Amps	
NEMA Nom. Eff.	86.5	P.F.	76	Line-line Res. @ 25°C.	8.44 Ohms
Rating - Duty	40C AMB-CONT		Temp. Rise @ Rated Load	77°C	
S.F. Amps			Temp. Rise @ S.F. Load		

Load Characteristics at 460 Volts, 60 Hz, 1.5 HP

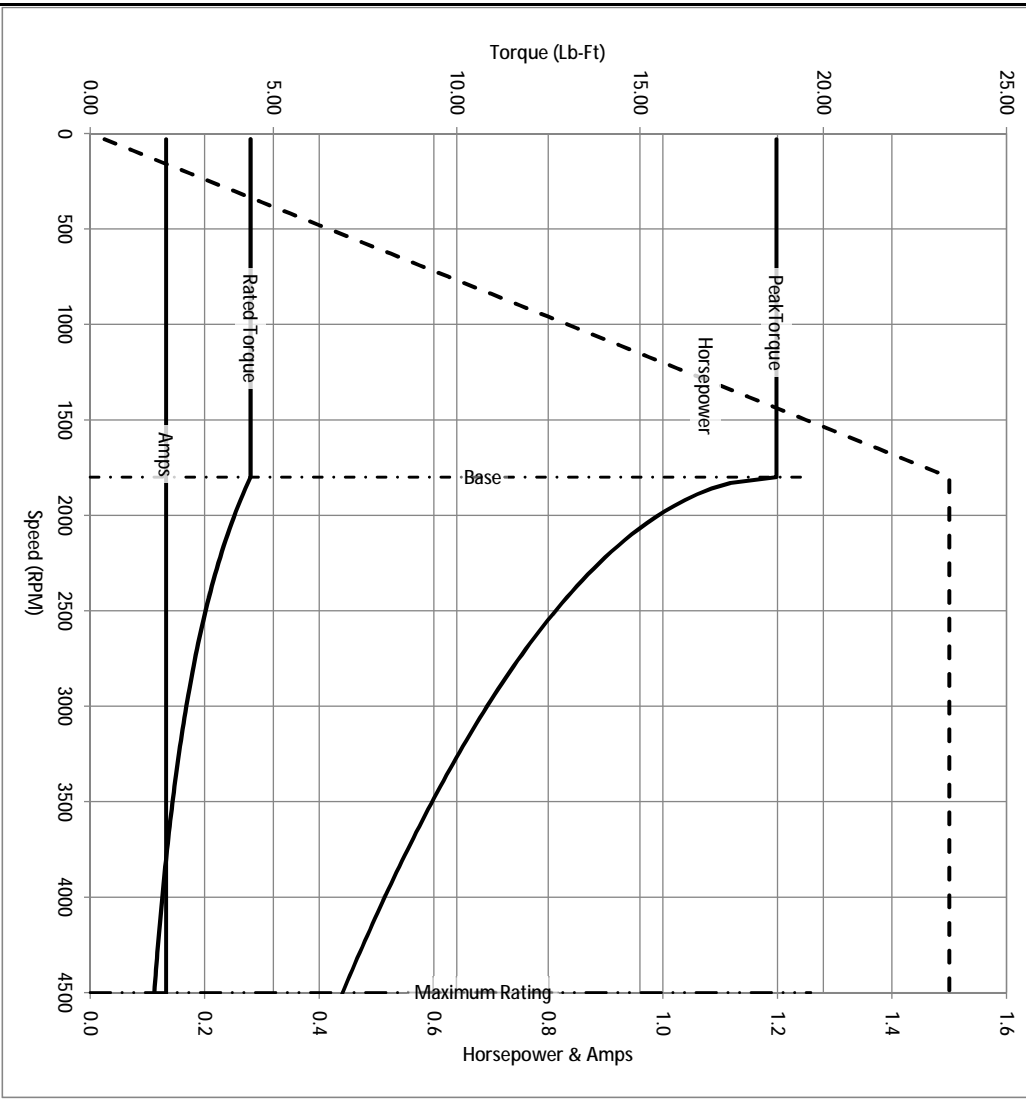
% of Rated Load	25	50	75	100	125	150	S.F.
Power Factor	35	54	68	76	81	84	
Efficiency	80.5	87.1	88.3	88.8	88.3	87.4	
Speed	1791	1782	1773	1764	1753	1743	
Line Amperes	1.26	1.46	1.76	2.07	2.45	2.87	

Baldor Electric Company Fort Smith, Arkansas

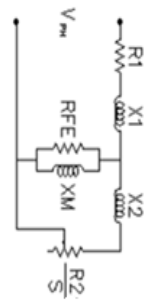


3/1/2013

Catalog	IDWNM3554T	NP VOLTS	230/460	ENCLOSURE	TENV	WYE CONN EQ CKT OHMS PER PHASE (BASE RATING, 20C)
FRAME	145TC	NP AMPS	4.2/2.1	Base Volts	460	R1 4.140 X1 8.770
HP	1.5 HP	DUTY	Cont	Base AMPS	2.07	R2 2.710 X2 7.810
BASE SPEED	1800	MAX SAFE RPM	4500	Slip Hz	1.20	XM1 217.396
PHASE/HZ	3/60	AMB ⁰ /C/INSUL	40/H	WK ² (lb-ft ²)	0.195	

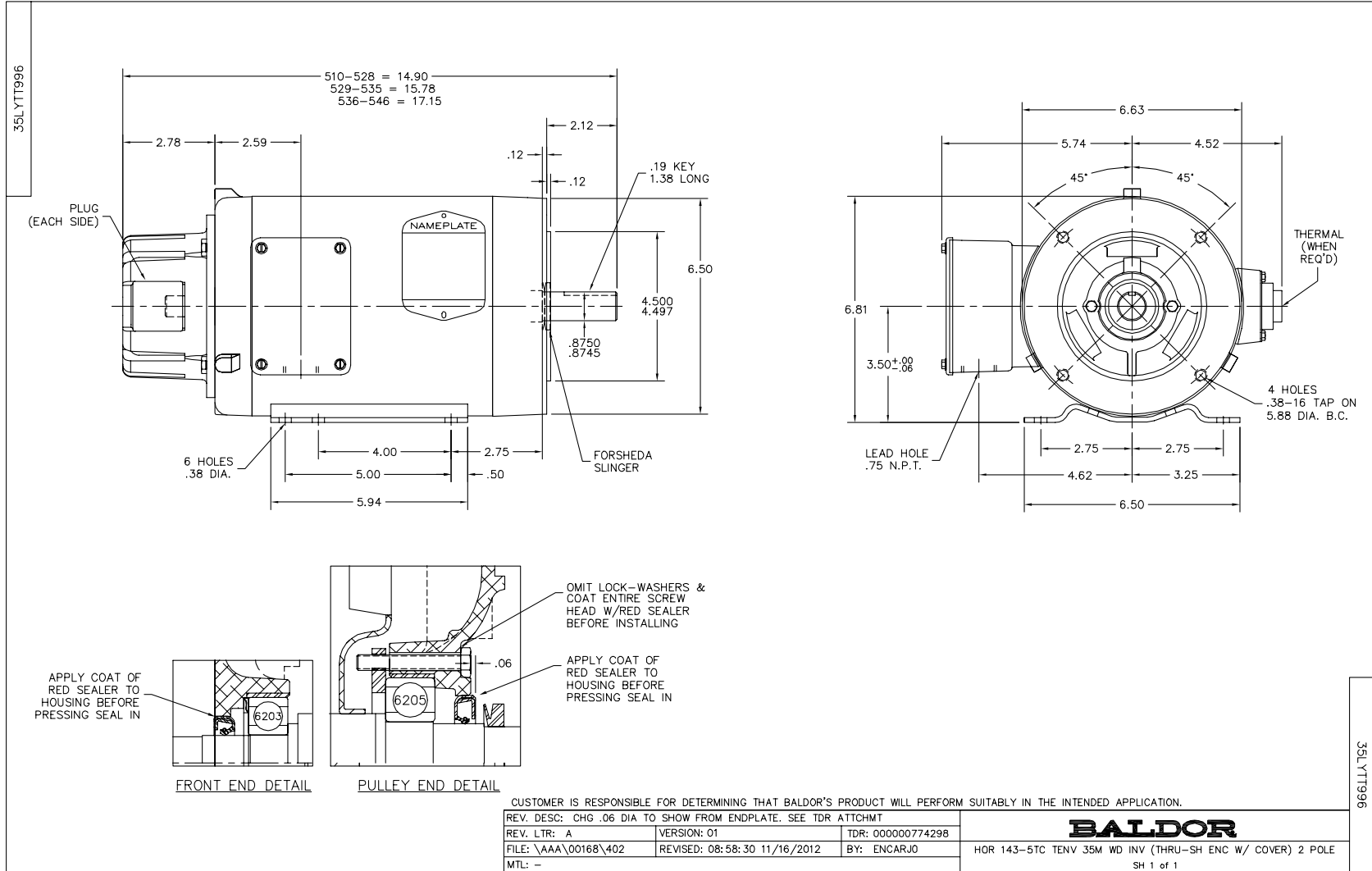


Remarks: Calculated Data



BALDOR
A MEMBER OF THE ABB GROUP

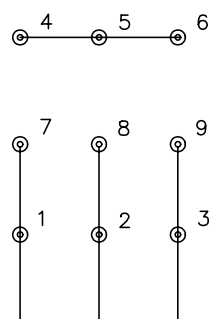
DR BY	ENR	A-C MOTOR	35T1996M613
CK BY		PERFORMANCE CURVES	
APP BY	ENR		
DATE	3/1/2013	ISSUE DATE	3/1/2013



CD0005

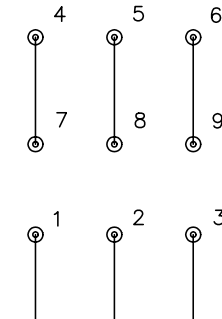


LOW VOLTAGE (2Y)



LINE

HIGH VOLTAGE (1Y)



LINE

NOTES:

1. INTERCHANGE ANY TWO LINE LEADS TO REVERSE ROTATION.
2. OPTIONAL THERMOSTATS ARE PROVIDED WHEN SPECIFIED.
3. ACTUAL NUMBER OF INTERNAL PARALLEL CIRCUITS MAY BE A MULTIPLE OF THOSE SHOWN ABOVE.
4. LEAD COLORS ARE OPTIONAL. LEADS MUST ALWAYS BE NUMBERED AS SHOWN.

REV. DESC: REVISE TO SHOW OPTIONAL COLORS			
REV. LTR: E	BY: JLP	REVISED: 01/19/99 10:15	TDR: 0171435
90000		FILE: AAA00005140	MDL: -
		MTL: -	

BALDOR ELECTRIC Co.

3PH, DV, 9 LEADS

CD0005