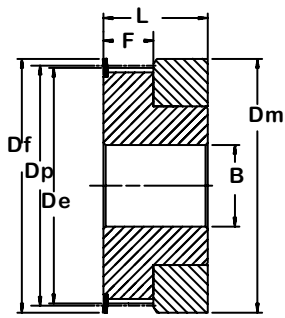
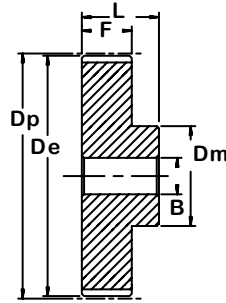


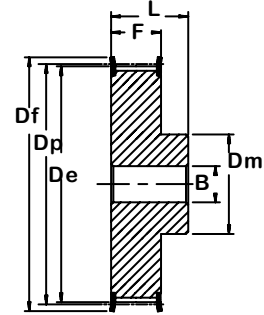
Metric Pitch Synchronous Belt Pulleys



Type 1F



Type 6



Type 6F

T2.5 (2.5 mm Pitch x 6 mm Belt Width)

Part No.	Type/ Mat.	Teeth	Dp	De	Approx. Df	Dm	F	L	Bore* ² ±1 mm	Weight kg	Flange Size* ¹
16T2.5/122	1F/A	12	9.60	9.00	13.0	12	9	16		0.003	6x13x0.5
16T2.5/142	1F/A	14	11.20	10.60	15.0	14	9	16		0.004	8x15x0.5
16T2.5/152	1F/A	15	12.00	11.40	15.0	15	9	16		0.005	8x15x0.5
16T2.5/162	1F/A	16	12.80	12.20	16.0	16	9	16		0.005	9.5x16x0.5
16T2.5/182	6F/A	18	14.40	13.80	17.5	10	10	16	3	0.006	11.6x17.5x0.5
16T2.5/192	6F/A	19	15.20	14.60	18.0	10	10	16	3	0.007	12.2x20x0.5
16T2.5/202	6F/A	20	16.00	15.40	19.5	11	10	16	3	0.008	12.2x20x0.5
16T2.5/222	6F/A	22	17.60	17.00	23.0	11	10	16	3	0.009	14.5x22x0.5
16T2.5/242	6F/A	24	19.15	18.55	23.0	12	10	16	3	0.012	14.5x25x0.5
16T2.5/252	6F/A	25	19.95	19.35	23.0	13	10	16	3	0.013	14.5x25x0.5
16T2.5/262	6F/A	26	20.75	20.15	25.0	14	10	16	4	0.014	17.8x26x0.5
16T2.5/282	6F/A	28	22.35	21.75	25.0	14	10	16	4	0.016	17.8x26x0.5
16T2.5/302	6F/A	30	23.95	23.35	28.0	16	10	16	6	0.018	20x28x0.5
16T2.5/322	6F/A	32	25.55	24.95	32.0	16	10	16	6	0.020	23x32x0.5
16T2.5/362	6F/A	36	28.70	28.10	36.0	20	10	16	6	0.026	25x36x0.5
16T2.5/402	6F/A	40	31.90	31.30	38.0	22	10	16	6	0.032	26.5x38x0.5
16T2.5/440	6/A	44	35.10	34.50	42.0	24	10	16	6	0.040	
16T2.5/480	6/A	48	38.30	37.70		26	10	16	6	0.048	
16T2.5/600	6/A	60	47.85	47.25		34	10	16	8	0.073	

T5 (5 mm Pitch x 10 mm Belt Width)

Part No.	Type/ Mat.	Teeth	Dp	De	Approx. Df	Dm	F	L	Bore* ² ±1 mm	Weight kg	Flange Size* ¹
21T5/102	6F/A	10	16.05	15.05	19.5	8	15	21		0.012	12x19.5x1
21T5/122	6F/A	12	19.25	18.25	23.0	11	15	21		0.016	12.5x23x1
21T5/142	6F/A	14	22.45	21.45	25.0	14	15	21		0.019	15x25x1
21T5/152	6F/A	15	24.05	23.05	28.0	16	15	21		0.021	17.8x28x1
21T5/162	6F/A	16	25.60	24.60	32.0	18	15	21		0.025	20x32x1
21T5/182	6F/A	18	28.80	27.80	32.0	20	15	21		0.031	23x32x1
21T5/192	6F/A	19	30.40	29.40	36.0	22	15	21		0.036	25x36x1
21T5/202	6F/A	20	32.00	31.00	36.0	23	15	21		0.038	25x36x1
21T5/222	6F/A	22	35.25	34.25	38.0	24	15	21		0.046	26.5x38x1
21T5/242	6F/A	24	38.40	37.40	42.0	26	15	21		0.054	30.5x42x1
21T5/252	6F/A	25	40.00	39.00	44.0	26	15	21		0.058	32.5x44x1
21T5/262	6F/A	26	41.60	40.60	44.0	26	15	21		0.062	32.5x44x1
21T5/272	6F/A	27	43.20	42.20	48.0	30	15	21	8	0.064	37x48x1
21T5/282	6F/A	28	44.75	43.75	48.0	32	15	21	8	0.071	37x48x1
21T5/302	6F/A	30	47.95	46.95	51.0	34	15	21	8	0.075	40x48x1
21T5/322	6F/A	32	51.10	50.10	54.0	38	15	21	8	0.088	43x51x1
21T5/362	6F/A	36	57.45	56.45	63.0	38	15	21	8	0.114	47x64x1
21T5/402	6F/A	40	63.85	62.85	66.0	40	15	21	8	0.138	52x66.5x1
21T5/422	6F/A	42	67.00	66.00	71.0	40	15	21	8	0.180	53x70x1
21T5/440	6/A	44	70.20	69.20		45	15	21	8	0.185	
21T5/480	6/A	48	76.55	75.55		50	15	21	8	0.200	
21T5/600	6/A	60	95.65	94.65		65	15	21	8	0.307	

*1 Recommended flange size (I.D. x O.D. x Thickness); steel.
Material: /A = Aluminum • /C = Cast Iron • /S = Steel
Metric tolerances correspond to ISO standard H9 for bores and keyways. Inch tolerances correspond to ANSI B17.1 for bores and keyways.

*2 Center holes provided if no bore size listed

